



Traditional*



Country French*



Craftsman*

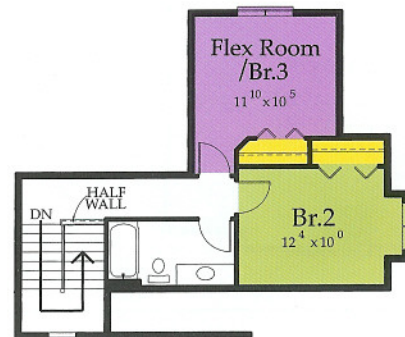
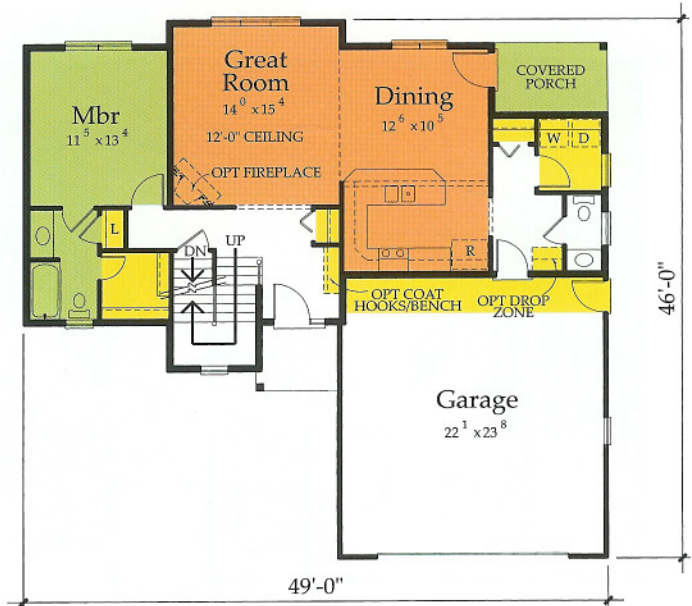
The Newell

Model # N465 c

Main – 1,093 Sq. Ft. / Second – 553 Sq. Ft. = Total 1,646 Sq. Ft.

This rear foyer makes carrying in groceries much easier! Bulk items are dropped off in the closet, laundry and cleaning supplies are stored in the laundry room, and groceries are taken right into the kitchen. The powder bath, located in the rear foyer near the garage, keeps both tiny and big feet from trekking through the house.

Once the kids are gone, this becomes a great home for empty nesters – with the upstairs bedrooms converting to a craft room, exercise room, small theater or an office.



How this home lives

- Socialize
- Relax
- Organize
- Flex

*Elevations may include optional features.